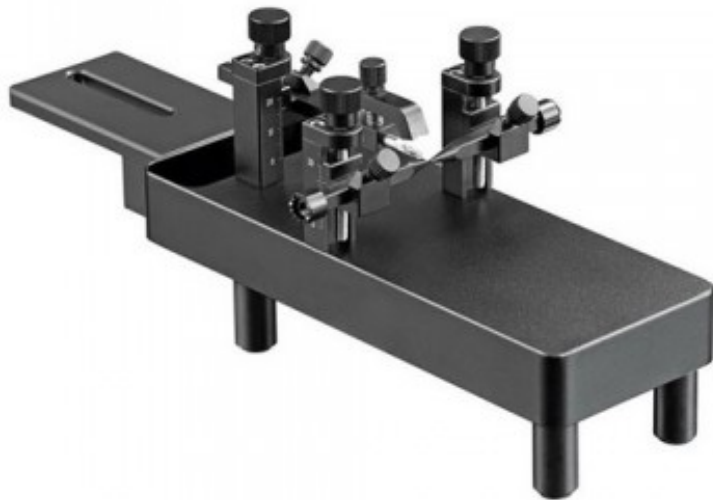


# Mouse and Neonatal Rat Adaptor



Standard for neonatal rat and mice

**Product codes:**

Reference: BLAB-ST-8030

**Product description:**

To be used with U frame Series from Bioseb or other brand instruments.

Mice and neonatal rat, are difficult to secure firmly and softly using a standard stereotaxic instrument. The stainless steel ear bars used for adult rats are too strong without compressing the sides of the skull inward. Considering there is no ear canal for neonatal rat, this adaptor employs a cheekbone locker to replace the ear bars. This design provides noninvasive and stable way to hold the neonatal rats.

Bioseb's Mouse and Neonatal Rat Adaptor are made of POM with tapered points on one end, and rubber tips on the other, to facilitate surgery on mice and rat pups.

The height can be adjusted flexibly, for experiments from different angles. Laser engraved scales show the vertical positions of the ear bars.

A tooth bar and nose clamp secures the nose.

**Product features:**

## Available models

